



## CSN® AIR HEATER TYPE 841

with axial-flow fan, protection mode IP 20

Application for air heater type 841:

E.g. punctiform heating of workplaces, thermal shielding at doors, heating of building containers and dressing rooms.

consisting of a sheet steel housing,  
built-in heating elements, not brought to red heat an axial-flow fan.

Installation: in all position

Including indicatin lamp and robust rotaryswitch.

Position 0 = off

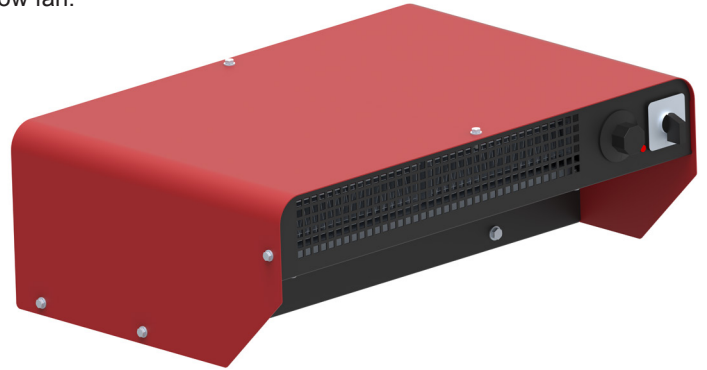
Position 1 = 1/3 power

Position 2 = 2/3 power

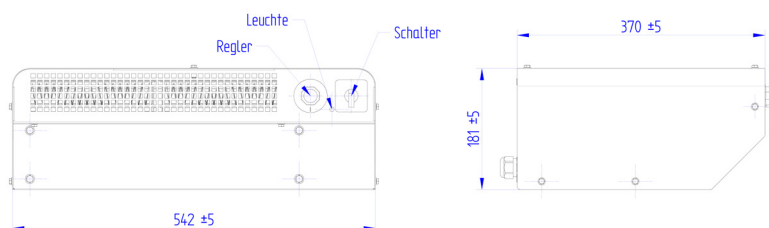
Position 3 = 3/3 power

On the rear of the air heater a 5-core feeding cable of  
3 m length with plug is provided for.

Voltage: 400 V A.C.,three-phase (with neutral conductor).



Type	Power kW	changeable kW	approx. housing diemensions in mm			air excape approx. mm	Qty. of heating elements	approx. air capacity freeblowing m³/h
			length	width	height			
841/6	6	2 - 4 - 6	542	370	181	367 x 57	3	725
841/8	7,2	2,4 - 4,8 - 7,2						



### Specialist contact person:

#### Janina Schulte

Phone: +49 (2392) - 692 - 37  
Fax: +49 (2392) - 692 - 8937  
eMail: janina.schulte@schniewindt.de

#### Katharina Krüdwagen

Phone: +49 (2392) - 692 - 31  
Fax: +49 (2392) - 692 - 8931  
eMail: katharina.kruedewagen@schniewindt.de